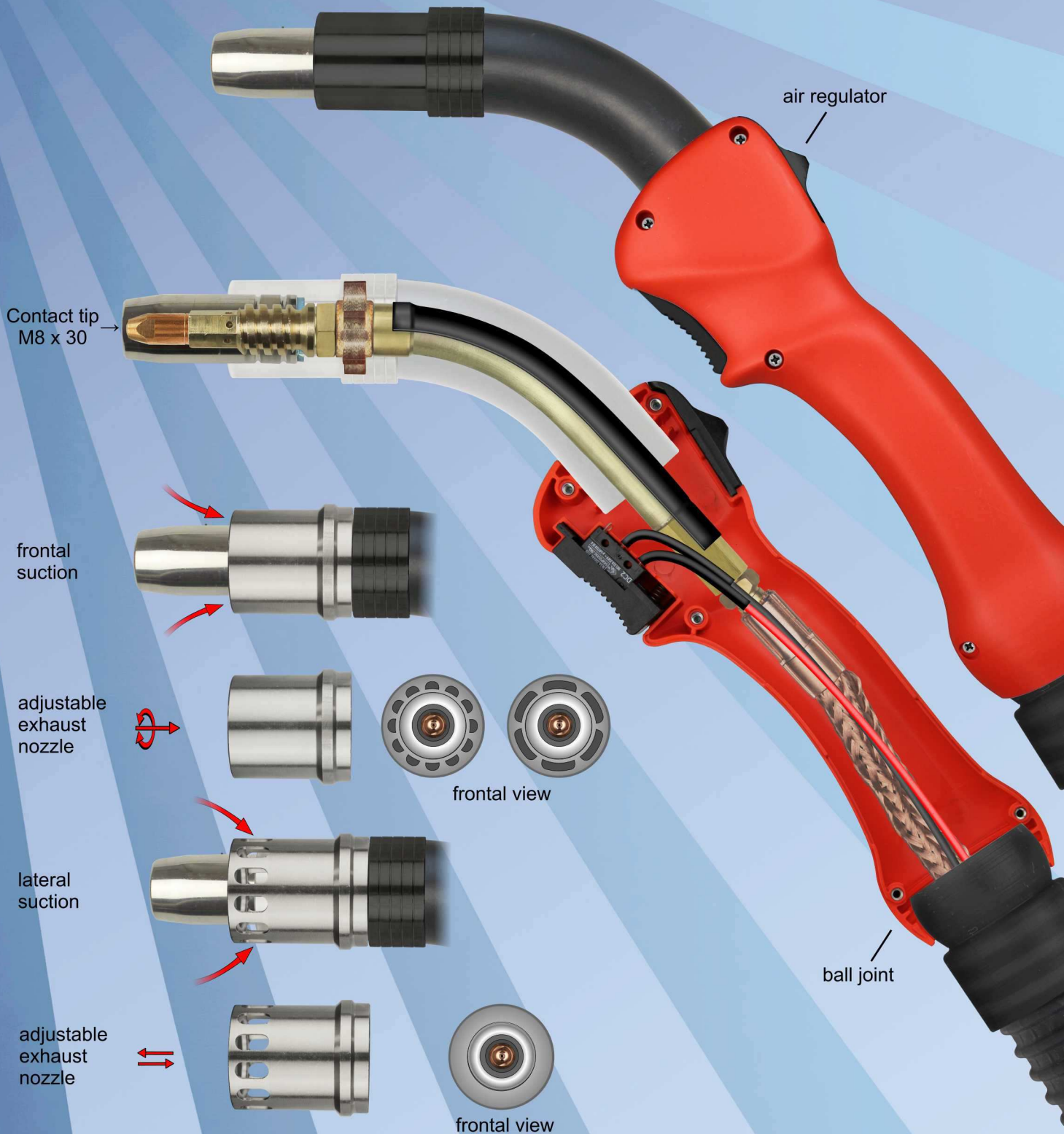


MHS RAUCH-250

air-cooled



250 Amp./100% duty cycle (CO₂)
210 Amp./100% duty cycle (mixed gas)

Spare parts like:

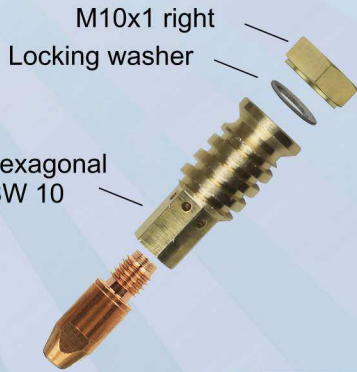
MHS RAUCH-330 water cooled

MHS RAUCH-250

air-cooled

Torch body
Part No. r2509101

Insulating hose
Part No. r2509121



Permanently installed
in the exhaust pipe

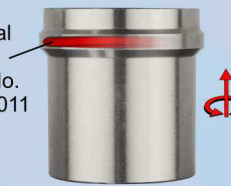


Exhaust tube
Part No. r2509102
(Aluminium black
anodised)

Adjustable exhaust
nozzle for **frontal**
suction

Adjustable exhaust
nozzle for **lateral**
suction

internal
O-ring
Part No.
r9131011



Part No. r9130012
(Brass plated)



Part No. r9130013
(Brass plated)

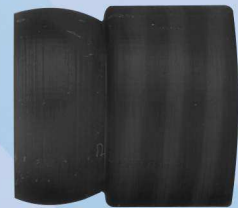


Air regulator

Drilled hole
Ø 30mm

RAUCH-handle with air regulator
Part No. r9193811

Ball joint
fits RAUCH - exhaust hose



Ø 32mm Part No. r9193803
Ø 38mm Part No. r9193804

Contact tip M8 x 30
Part No. 830□401(CuCrZr)
□ Please fill in wire diameter



Nozzle receptacle
with acme thread
Part No. ven98001



Locking washer
Part No. ven91985



Brass nut M10x1
Part No. ven91984



Conical gas nozzle ID 15mm
with acme thread
Part No. ven93002



Cylindric gas nozzle ID 18mm
with acme thread
Part No. ven93302



Narrow-gap gas nozzle
Part No. r3309364



Narrow-gap gas nozzle
Part No. r3309362
with silicon ring
Part No. r3309363



Narrow-gap contact tip
Part No. 88551241

HSN 862-4